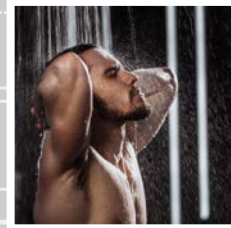
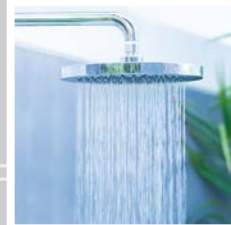
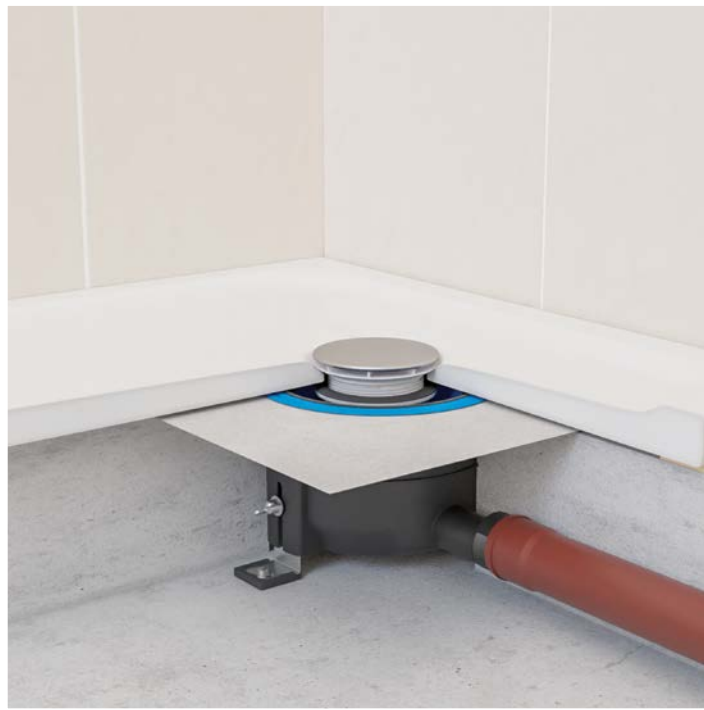
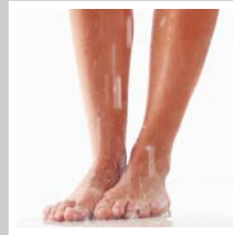


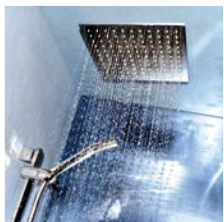


SIPHONS ABLÄUFE



DN50

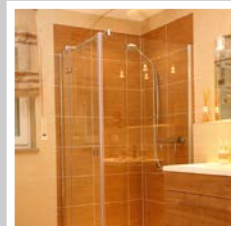
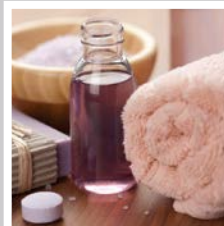
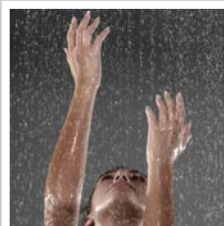
193



HL Siphons

4. Shower trays

4



HL Siphons for shower trays

Basic information about design and installation

Basically HL supplies siphons for all usual shower trays, which are according to the standards. To select the right product, please notice the following criteria:

▲ Hole diameter of the shower tray

The European standard HL 274 differs between shower trays with hole diameters Ø 52 mm or Ø 62 mm and Ø 90 mm. HL-shower tray siphons fit to designs, which are according to the European standard (conus, thickness...). To get the perfect tightness, one should take care to use products of high quality of the shower tray.

▲ Capacity

All mentioned drain capacities of shower trays are values, which are tested under standard parameters. Trays with hole diameter Ø 52 mm and Ø 62 mm are tested with 120mm water height, trays with diameter Ø 90 mm only with 15mm, as more and more very flat shower trays are used because of the low entry level.

Of course the water coming from the shower should not be more than the capacity of the drain. We recommend to calculate with a certain cushion.

▲ Maintenance and cleaning

To avoid the deinstallation of the siphon, every time the outlet is plugged, our traps are designed with either removable traps or hair catchers. With smaller hole diameters one should still plan an inspection door. At flat shower trays with hole diameter Ø 90 mm one do not need this. Therefore the siphon itself should be provided with an access to the waste pipe, when it is plugged. ATTENTION: Avoid cleaning with compressed air, as the connection parts in the siphon or in the drain pipe may be splitted.

▲ Convenient in installation

HL offers it's shower tray siphons with rotatable ball-joints, which allow a very quick and also stressless installation.

▲ Flat shower trays

Flat shower trays may be installed directly on the screed with a rest barrier of max. 2cm - and this still counts - acc. to ÖNORM B 3407- as „barriere-free“ installation and therefore as disabled-accessible. The mounting on the screed is cost and time saving - no extra

formworks have to be done on the building site. Beside of that, the waterproofing may be applied on one surface and is not interrupted by hollows or penetrations. With a conventional shower tray siphon (e.g. HL520F) this kind of installation is not possible - there is no way to connect the waterproofing to the siphon. Exactly for that reason HL570 FlexBox - as a complete system solution - was designed. Detailed information please see „product data“.

Relevant standards/directives

EN 274 Drains and siphons for sanitary equipment

HL Siphons for shower trays – Products – Overview

Siphons



Product	HL514	HL514/SN	HL520F
Description	Shower tray siphon with plug	Shower tray siphon with stainless steel cover	Shower tray siphon with ball joint and stainless steel cover
Function	For siphoning shower trays with tray hole Ø 52 mm	For siphoning shower trays with tray hole Ø 52 mm, flat	For siphoning shower trays with tray hole 90mm, high capacity

Siphons

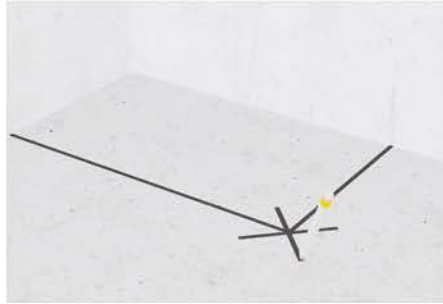


Product	HL511N	HL521	HL570
Description	Shower tray siphon with ball joint and stainless steel cover	Flat shower tray siphon with ball joint and stainless steel cover	Shower tray siphon for flat shower trays
Function	For siphoning shower trays with tray hole 90mm	For siphoning shower trays with tray hole 90mm, flat version	System solution for the waterproof connection between waterproofing and drain body.

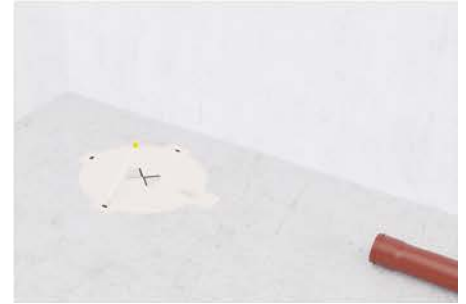
HL Shower Trays - Installation of HL570



1. Measure distances of the middle of the tray hole



2. Transfer measures to the concrete ceiling



3. Mark positions for the drilling holes



4. Drill holes



5. Fix drain body with fixing angles



6. Connect drain body with the drain pipe, adjust the slope of the pipe



7. Fill in screed



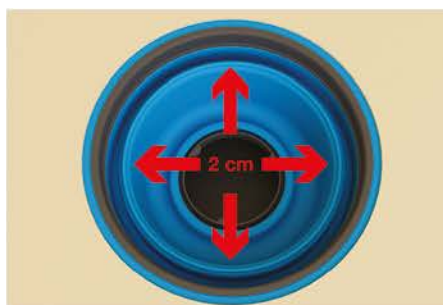
8. Cut salient nozzle



9. Insert sealing kit (flex-element) in the drain body



10. Apply moisture proofing compound



11. Maximum deviation: 4cm (plus/minus 2cm from the center)



12. Insert the waste valve and screw it together with the counternut. The gasket has to be tight on the bottom of the tray

HL Shower Trays - Installation of HL570



13. Set tray on the screed

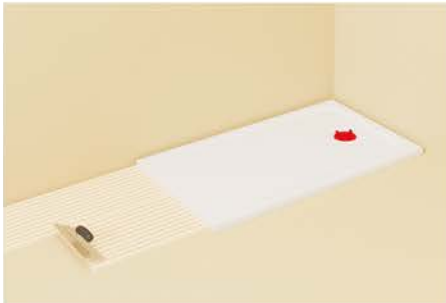


14. Pull bottom ring of the counter nut to the waste valve



15. Connect flex-element with bottom ring of the counter nut

- Dont forget: Leak test
- After leak test insert lot cover again



16. Apply tile glue



17. Set tiles



18. Sectional drawing of the floor



19. Remove lot cover, insert siphon and cover



20. Good job!



HL Siphons for shower trays – Products – Data

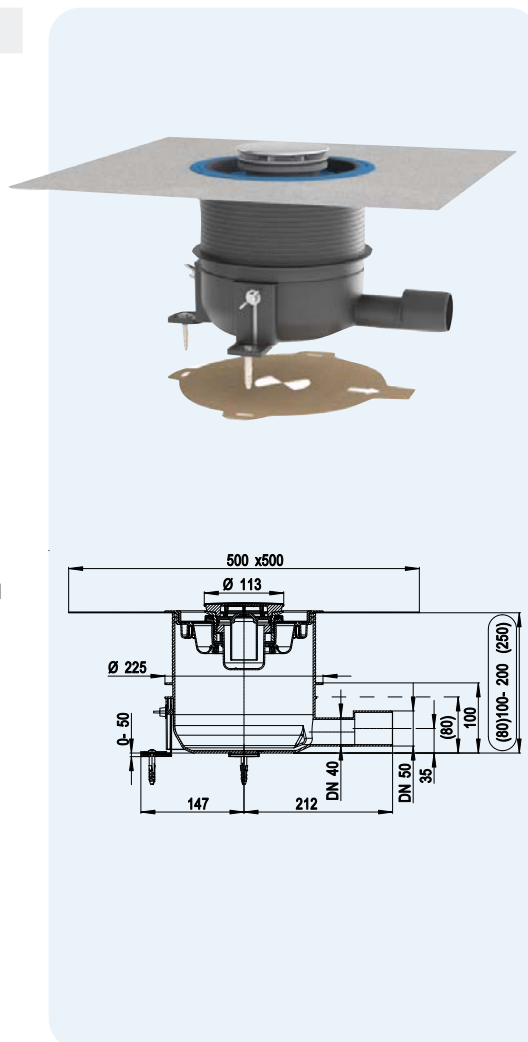
HL570 FlexBox Complete installation-kit for flat shower trays, incl. stainless steel cover

HL570.0 FlexBox Complete installation-kit for flat shower trays, without cover

HL570.0 FlexBox-Plan Complete installation-kit for flat shower trays, but with flattened screw valve

Data

Capacity	0,5 l/s
Material	PP/TPE/Stainless steel
Constr. height	80 - 200 mm (250 mm)
Visible parts	HL570: Stainless steel cover Ø 113 mm HL570.0: Without cover
Connection	Tray hole Ø 90 mm
Outlet dimension	DN40/50 horizontal
Siphon	Removable 2-part siphon
Standard	EN 274 ÖNORM B 3407
Height of seal water	50 mm
Including	Drain body with lot cover, 3 fixing angles and drilling template; Flex-element (blue), cover, waste valve with lot cover/mounting wrench and 2-part siphon
Additional information	The drain body is set in the screed and connected information to the moisture proofing compound. Waterproof connection between shower tray and drain body by snapping on the flex-element. Horizontal and vertical deviations of 4cm (plus/minus 2cm from the center) are possible. Soundproofing tested Test certificate: www.hl.at Compatibility list for matching shower trays at www.hl.at
Recommended for	Flat shower trays made of steel enamel, stone, acryl, mineral casting... with hole Ø 90 mm
Accessories	Screw valve HL0570.1E-Plan for shower trays that do NOT comply with the standard specifications for the geometry of the drain opening according to EN251.



HL-No.	Dimension	Cover	Weight	EAN	Piece/package
570 FlexBox	DN40/50	Stainless steel V2A	530 g	+049998	1
570.0 FlexBox	DN40/50	-	390 g	+050017	1
570.0-Plan FlexBox	DN40/50	-			1

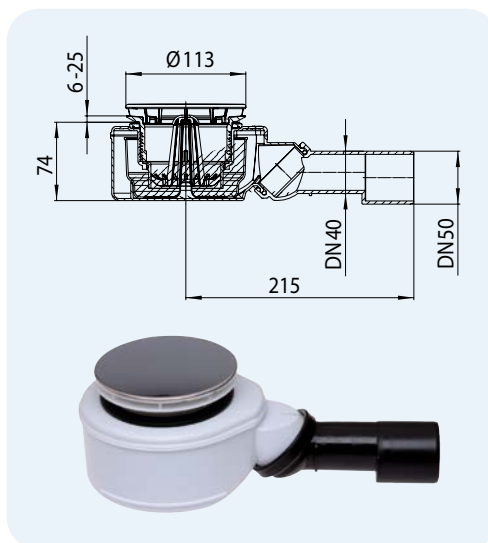
HL0570.1E-Plan



HL520F Shower tray siphon DN40/50 for tray hole 90 mm

Data

Capacity	0,60 l/s
Material	PP/PE
Visible parts	Cover platte Ø 112 mm, polished stainless steel
Connection	Tray hole Ø 90 mm
Outlet dimension	Convertible from horizontal to vertical, DN40/50, adjustable in lenght
Stench trap	Removable rubber membrane
Standard	EN274
Height of seal water	50 mm
Including	Hair catcher, lot cover
Additional information	Installation height 74 mm!



HL-No.	Dimension	Cover plate	Capacity	Installation height	Weight	EAN	Piece/package
520F	DN40/50	Stainless steel	0,6 l/s	74 mm	530 g	+037452	1
520F.0	DN40/50	-	0,6 l/s	74 mm	390 g	+037476	1
520	DN50	Stainless steel	0,9 l/s	83 mm	530 g	+031122	1

HL522... Coloured stainless steel covers, fitting to HL520-, HL570- and HL522-series

Data

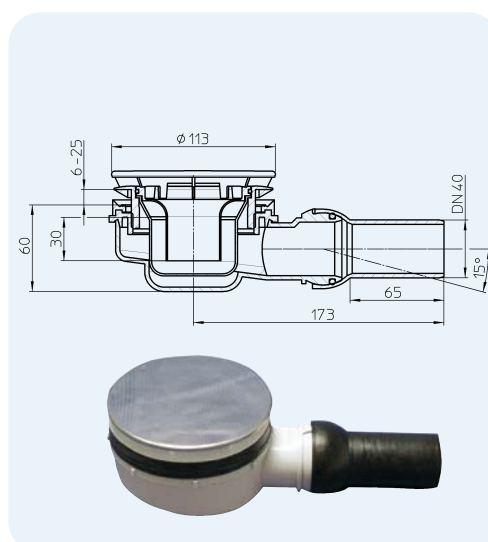
Ø	112 mm
Material	HL522.1: Stainless steel polished HL522.11: Gold-plated brass HL522.2: Solid brass HL522.3: Stainless steel, White coloured

	HL522.1	HL522.11	HL522.2	HL522.3
HL-No.	Colour	Weight	EAN	Piece/package
522.1	Stainless steel	139 g	+008902	1
522.11	Gold-plated brass	139 g	+008926	1
522.2	Solid brass	139 g	+008940	1
522.3	White	139 g	+ 008964	1

HL521 Flat shower tray siphon DN40 with ball joint for tray hole 90mm

Data

Capacity	0,42 l/s
Material	PP/PE
Visible parts	Stainless steel
Connection dimension	For tray hole Ø 90 mm
Outlet dimension	with adjustable ball joint 0-15° DN40
Odor trap	Removable
Standard	EN274
Height of seal water	30 mm
Additional information	Height over all 60 mm!

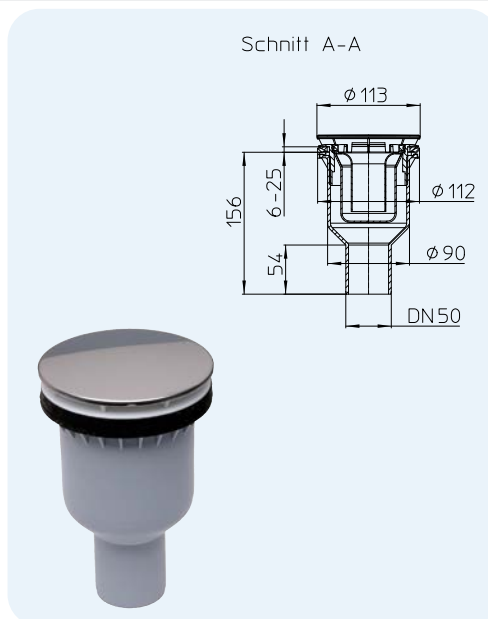


HL-No.	Dimension	Weight	EAN
HL521	DN40	410 g	+033263

HL511N Vertical shower tray siphon DN50 for tray hole Ø 90 mm

Data

Capacity	0,53 l/s
Material	PP
Grate	Cover plate Ø 113 mm, polished stainless steel
Connection dimension	For tray hole Ø 90 mm
Outlet dimension	Vertical
Trap	Removable
Standard	EN274
Height of seal water	50 mm
Including	Lot cover
Additional information	Vertical shower trap siphon

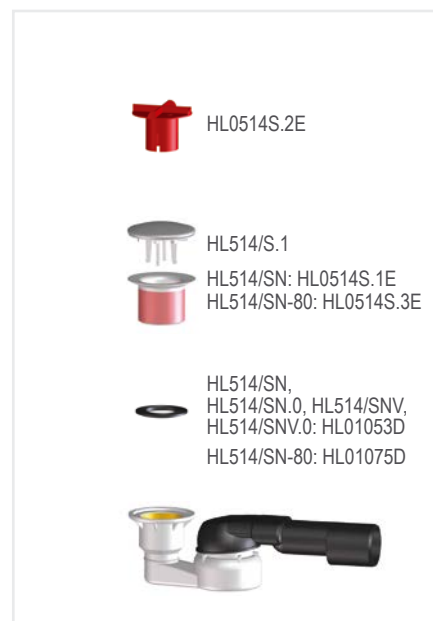
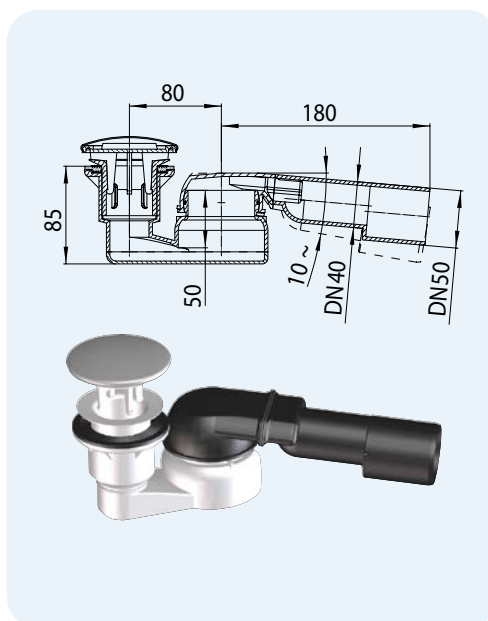


HL-No.	Dimension	Cover plate	Weight	EAN	Piece/package
HL511N	DN50	Stainless steel	300 g	+034895	1

HL514/SN... Shower tray siphon 6/4" with ball-joint, (cover and tube connector)

Data

Capacity	HL514/SN, HL514/SNV.0, HL514/SNV: 0,48 l/s
Material	PP outlet pluggable and weldable
Visible parts	HL514/SN: Stainless steel cover Ø 86 mm, HL514/SN.0, HL514/SNV.0: Without cover
Connection dimension	HL514/SN, HL514/SNV, HL514/SN.0, HL514/SNV.0: for tray holes Ø 52 mm HL514/SN-80: Valve Ø 80 mm for tray holes Ø 62 mm
Outlet dimension	horizontal, ball-joint: 280° rotatable, 10° inclinable DN 40/50 adjustable in length
Hose nozzle	HL514/SNV, HL514/SNV.0: Tube connector 8 - 13 mm e.g. for leakage tubes or steam showers.
Standard	EN274
Height of seal water	50 mm



HL-No.	Dimension	Cover	Hose nozzle	Weight	EAN	Piece/package
514/SN	DN40/50	Stainless steel	—	330 g	+004751	10
514/SN-80	DN40/50	Stainless steel	—	335 g	+004775	1
514/SN.0	DN40/50	—	—	235 g	+004799	10
514/SNV	DN40/50	Stainless steel	8 - 13 mm	330 g	+004911	10
514/SNV.0	DN40/50	—	8 - 13 mm	235 g	+010776	10

HL514/S... Stainless steel covers in different colours, fitting to HL514/SN and HL514/SNV

Data

Ø	86 mm
Material	HL514/S.1: Stainless steel HL514/S.11: Gold-plated brass HL514/S.2: Solid brass HL514/S.3: Stainless steel, White coloured

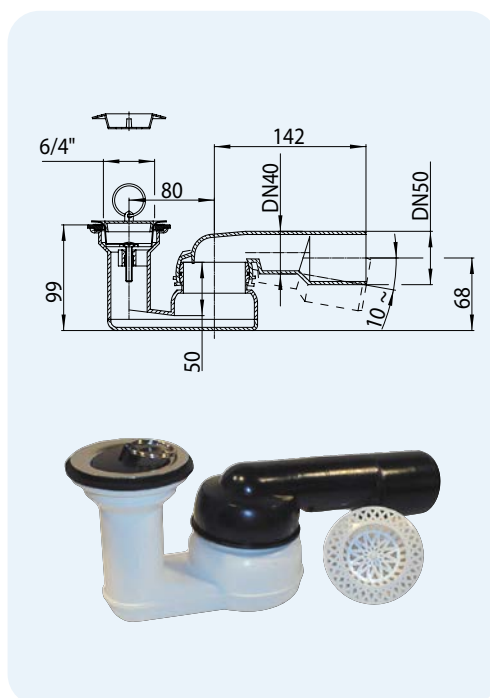


HL-No.	Colour	Weight	EAN	Piece/package
514/S.1	Stainless steel	95 g	+405138	1
514/S.11	Gold-plated brass	95 g	+425136	1
514/S.2	Solid brass	95 g	+425143	1
514/S.3	White	95 g	+ 525140	1

HL514 Shower tray siphon 6/4" with ball-joint and plug

Data

Capacity	0,58 l/s
Material	PP, outlet pluggable and weldable
Visible parts	Stainless steel
Connection dimension	HL514: Valve 6/4" for hole Ø 52 mm, HL514-80: Valve Ø 80 mm for hole Ø 62 mm
Outlet dimension	horizontal, ball-joint: 280° rotatable, 10° inclinable HL514, HL514-80: DN 40/50 cuttable in length
Hose nozzle	–
Standard	EN274
Height of seal water	50 mm
Including	Plug and hair catcher 6/4"

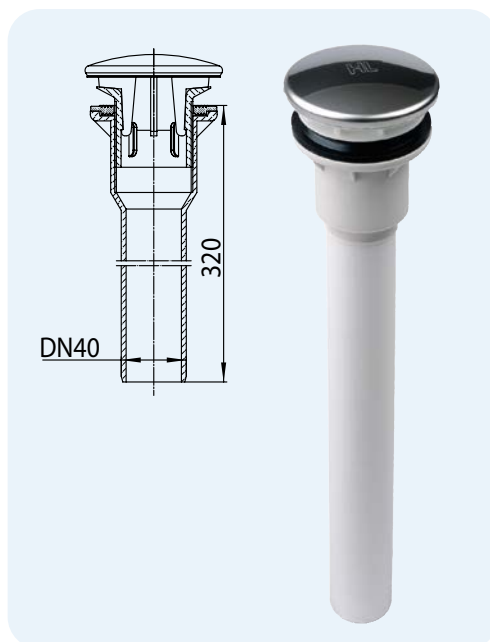


HL-No.	Dimension	Weight	EAN	Piece/package
514	DN40/50	275 g	+305148	10
514-80	DN40/50	260 g	+514809	1

HL513/S Vertical shower trap connector 6/4"

Data

Capacity	0,75 l/s
Material	PP
Visible parts	Stainless steel 86mm
Connection dimension	Outlet 6/4" for hole 52mm
Outlet dimension	vertical DN40
Standard	EN274
Additional info	without trap



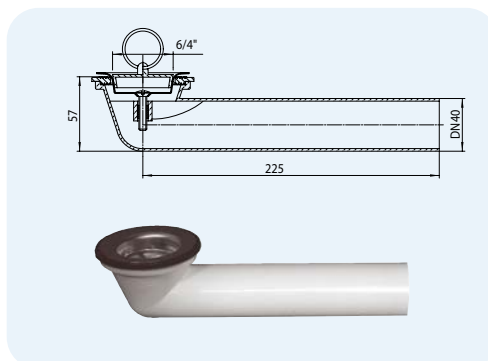
HL-No.	Dimension	Cover	Weight	EAN	Piece/package
513/S	DN40	Stainless steel	420 g	+513000	1
513/S.0	DN40	–	325 g	+513017	1

HL Siphons for shower trays – Products – Accessories

HL16.1 Elbow connector for shower trays

Data

Material	PP
Connection dimension	Waste outlet 6/4"
Outlet	horizontal, DN 40/50 adjustable in length



HL-No.	Dimension	Weight	EAN	Piece/package
16.1	DN40	150 g	+301614	1

HL515, HL515/S, HL517 Acrylic glass immersion tube

Data

Material	Polycarbonate
Dimension	HL515, HL515/S: h = 100 mm HL517: h = 105 mm
Additional information	HL515: Fits to HL514 and HL80.2(H) HL515/S: fits to HL514/SN(V) and HL513/S HL517: fits to HL520- and HL522-series All immersion tubes are available in different length on request

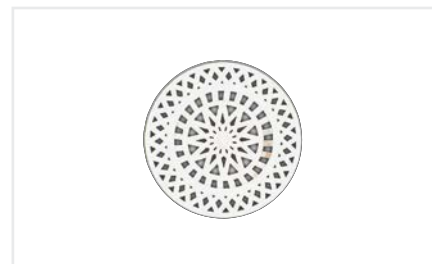
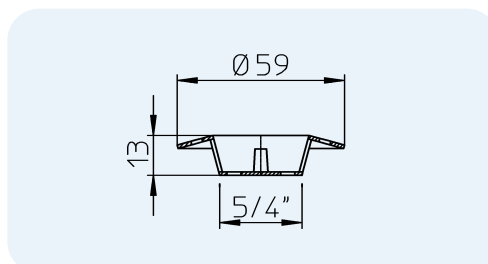


HL-No.	Dimension	Weight	EAN	Piece/package
515	h = 100 mm	42 g	+305155	1
515/S	h = 100 mm	42 g	+315154	1
517	h = 105 mm	87 g	+008810	1

HL525, HL526 Hair catcher

Data

Material	PE
Dimension	HL525: 5/4" HL526: 6/4"



HL-No.	Dimension	Weight	EAN	Piece/package
525	5/4"	12 g	+305254	1
526	6/4"	12 g	+305261	1